

“ ITE® “ CALIBRATABLE PRESSURE GAUGES

1. DRY PULSE-FREE GAUGES Series 820 Class 1.6 - Ø 80 mm

- All “823 & 825 SERIES” gauges are for CFC, HCFC and HFC.
- 80 mm Scale Diameter. 1/8” male NPT (= MPT) or 1/4” male flare SAE (= MFL).
- “PULSE FREE” mechanism offers a reading as stable as oil filled gauges but *WITH NO OIL*. Effective dampening of compressor pulsations on pointershaft.
- Gauges are calibratable (easy “zero positioning” needle).

TYPES FOR ORDERING

- **823 RED HIGH PRESSURE SERIES (= HP)**
 From 0 bar (0 psi) to 34 bar (500 psi)
 For R410A gauges from 0 bar (0 psi) to 55 bar (800 psi).
- **825 BLUE LOW PRESSURE COMPOUND SERIES (= LP)**
 From -1 bar (-30 inch Hg) to 8 bar (120 psi) linear with retard up to 17 bar (250 psi)
 For R410A gauges from -1 bar (-30 inch Hg) to 30 bar (440 psi).

Gauge SCALE options ordering

- Select it and Add it to the “823” or “825” gauge part number.

B	bar only	
BC	bar/°C	for R12, R22, R502
BPC	bar/psi/°C	for R12, R22, R502
BPC/410	bar/psi/°C	for R410A
BPC/410/27	bar/psi/°C	for R22, R407C, R410A
BC/4	bar/°C	for R134a, R404A
BC/447	bar/°C	for R134a, R404A, R407C, R507
BC/27	bar/°C	for R22, R407C
BC/247	bar/°C	for R22, R134a, R404A, R407C

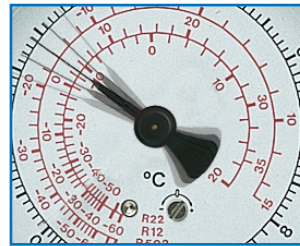
TYPES OFFERED

823 +SCALE HP GAUGE 1/8” MPT vertical bottom connection
825 +SCALE LP GAUGE 1/8” MPT vertical bottom connection
 Example: 823-BC

823-S +SCALE HP GAUGE 1/4” MFL vertical bottom connection
825-S +SCALE LP GAUGE 1/4” MFL vertical bottom connection
 Example: 823-S-BC

823-C +SCALE HP GAUGE 1/4” MFL center back connection
825-C +SCALE LP GAUGE 1/4” MFL center back connection
 Example: 823-C-BC

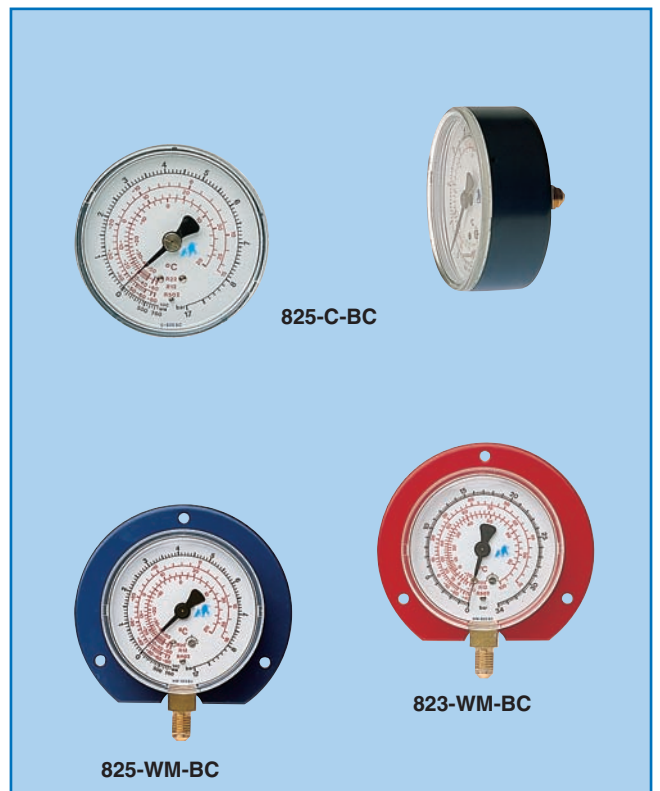
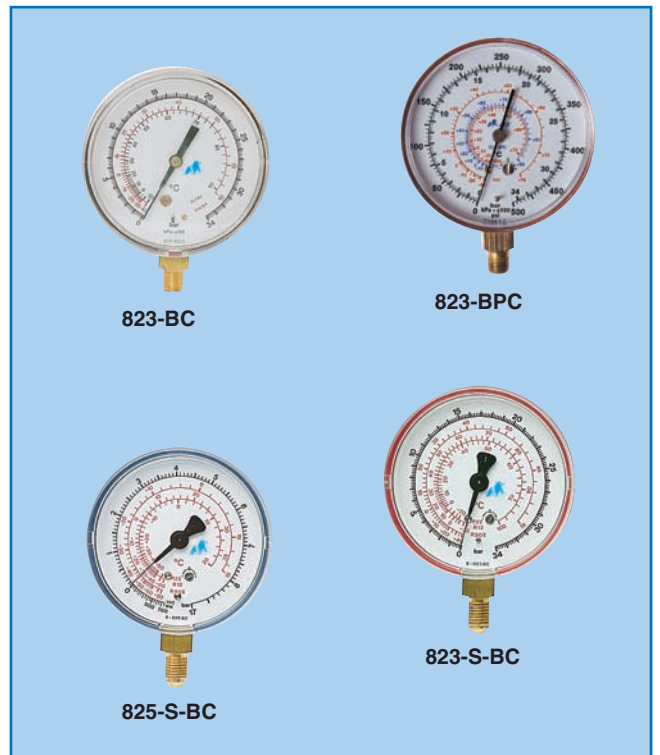
823-WM +SCALE HP GAUGE 1/4” MFL vertical bottom connection
 + front ring wall mounting
825-WM +SCALE LP GAUGE 1/4” MFL vertical bottom connection
 + front ring wall mounting
 Example: 823-WM-BC



Other gauge

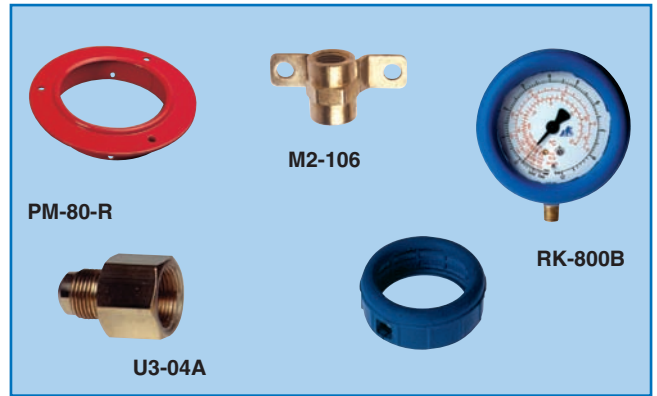


“ ITE “ pulse free gauge



ACCESSORIES

PM-80-B	Blue front ring panel mounting (80 mm)
PM-80-R	Red front ring panel mounting (80 mm)
WM-80-B	Blue ring wall mounting (80 mm)
WM-80-R	Red ring wall mounting (80 mm)
M2-106	1/8" gauges mounting bracket (brass)
M2-108	1/4" gauges mounting bracket (brass)
U3-04A	All gauges connector fitting (brass) 1/8" FPT x 1/4" MFL
U3-04B	All gauges connector fitting (brass) 1/4" FPT x 1/4" MFL
CRISTAL CLEAR	Plastic screw-on gauge lens (80 mm)
RK-800B	Rubber gauge protector blue
RK-800R	Rubber gauge protector red



2. DRY PULSE-FREE GAUGES Series 820 Class 1.0 - Ø 80 mm

- These gauges are similar to "823 & 825 SERIES STANDARD CLASS 1.6" shown on the previous page, except for accuracy.
- These gauges are **CLASS 1.0** tested, calibrated and marked with **KI. 1.0** (1% max error in function).

Gauge SCALE options ordering

- Select it and add it to the "823" or "825" gauge part number
- | | | |
|--------------------|---------------|--------------------------------------|
| BC-1.0 | bar/°C | for R12, R22, R502 |
| BC-1.0/447 | bar/°C | for R134a, R404A, R407A, R507 |
| BPC-1.0/410 | bar/°C | for R410A |

TYPES OFFERED

823 +SCALE	CLASS 1.0 HP GAUGE 1/8" MPT vertical bottom connection
825 +SCALE	CLASS 1.0 LP GAUGE 1/8" MPT vertical bottom connection
823-S +SCALE	CLASS 1.0 HP GAUGE 1/4" MFL vertical bottom connection
825-S +SCALE	CLASS 1.0 LP GAUGE 1/4" MFL vertical bottom connection

