

# HOLE CUTTING TOOLS

## HCT-212 HOLE CUTTING TOOL

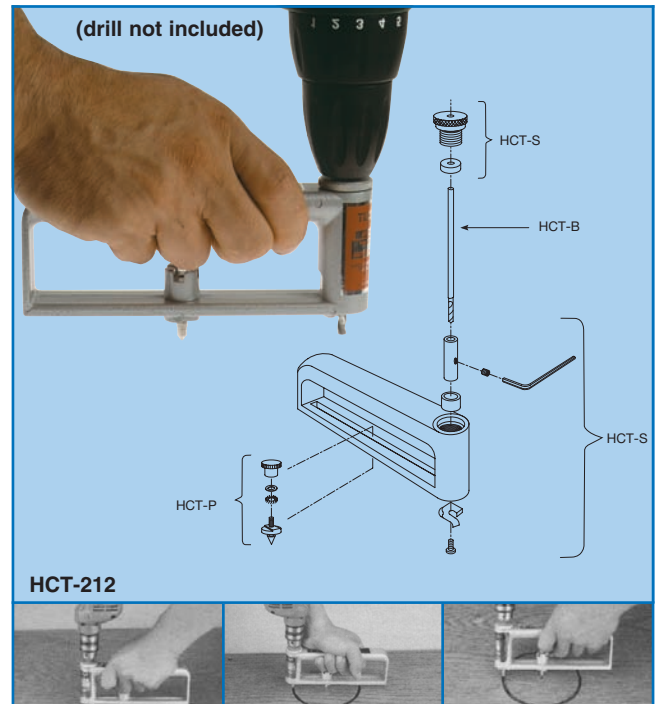
### FEATURES

- Designed to cut **5 cm to 30 cm (2" to 12")** holes in galvanized sheet metal.
- Uses mill type cutting bit.
- Can be installed in the chuck of any standard electrical drill as small as  $\frac{1}{4}$ ".
- Lightweight aluminium frame design.
- Capacities for
 

aluminium	<b>1,46 mm (0,054")</b>
copper	<b>1,07 mm (0,042")</b>
stainless steel	<b>0,89 mm (0,035")</b>
galvanized sheet metal	<b>1,07 mm (0,042")</b>
- Weight: 454 g.

### REPLACEMENT PARTS

- HCT-B** Bit (M730-2)
- HCT-P** Pivot pin set
- HCT-S** Spare parts set



## HPN HAND POWER NIBBLER SET for power drill attachment

- Cuts cleanly without distortion or jagged edges.
- Safe and easy to use.
- Cuts sheet material and cladding, rounded tubular sections, corrugated materials etc., in straight lines or curves with a diameter as small as 12 mm ( $\frac{1}{2}$ ").
- With a pre-drilled 12 mm ( $\frac{1}{2}$ ") hole, most shapes can be easily cut-out.
- The cutting head adjusts for different directions.
- Punch and die can quickly and easily be replaced.
- Drill clamp, holding the nibbler and the drill for "hands off" operation, will ensure no vibrations, cleaner cutting and longer life of punch and die.
- Clamps can also be used to hold the material to be cut
- Power source: any power drill with speed range between 1500 and 3000 rpm.
- Capacities for:
  - brass, aluminium alloy, plastic, fibre glass: 2,0 mm
  - mild steel: 1,8 mm
  - stainless steel: 1,2 mm
- Complete set includes: body, tool rest, cutter holder, hex. key, plastic handle.

