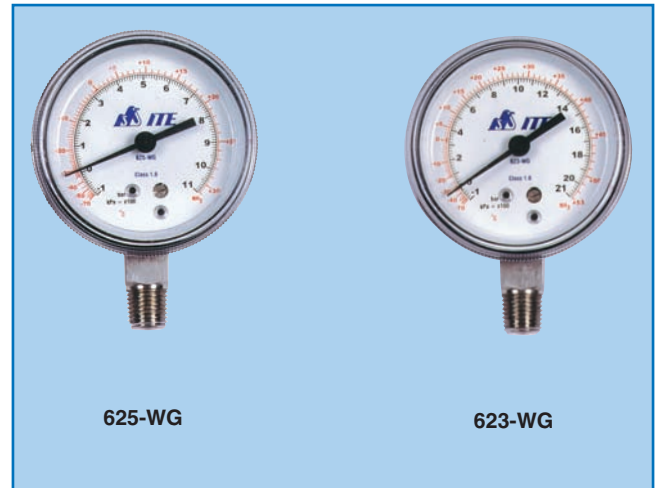


# GAUGES, MANIFOLDS AND HOSES FOR AMMONIA

## 1. PULSE-FREE GAUGES Serie NH<sub>3</sub>

- 68 mm scale diameter.
- 316 stainless steel bourdon tube.
- 1/4" MPT steel connection.
- Steel casing, black painted.
- Polycarbonate crystals.
- Scales: bar and °C.

<b>623-WG</b>	<b>HP GAUGE 1/4" MPT</b> vertical bottom steel connection (-1 bar to +21 bar)
<b>625-WG</b>	<b>LP GAUGE 1/4" MPT</b> vertical bottom steel connection (-1 bar to +11 bar)



## 2. "AMMONIA SERIES" SERVICE HOSES

- Designed with straight stainless steel *SWIVEL COUPLERS* at both ends. Stainless steel *CRIMPINGS*.
- Available in soft black material.
- All hoses have straight female flare SAE connections on both ends (= *FFL*).

<b>NH3-2S-048</b>	<b>NH<sub>3</sub> hose 2 x 1/4" FFL</b> straight L = 120 cm (48")
<b>NH3-2S-060</b>	<b>NH<sub>3</sub> hose 2 x 1/4" FFL</b> straight L = 150 cm (60")
<b>NH3-2S-072</b>	<b>NH<sub>3</sub> hose 2 x 1/4" FFL</b> straight L = 180 cm (72")
<b>NH3-2S-120</b>	<b>NH<sub>3</sub> hose 2 x 1/4" FFL</b> straight L = 300 cm (120")

- Working pressure for 1/4": **55 bar.**
- Burst pressure for 1/4": **220 bar.**

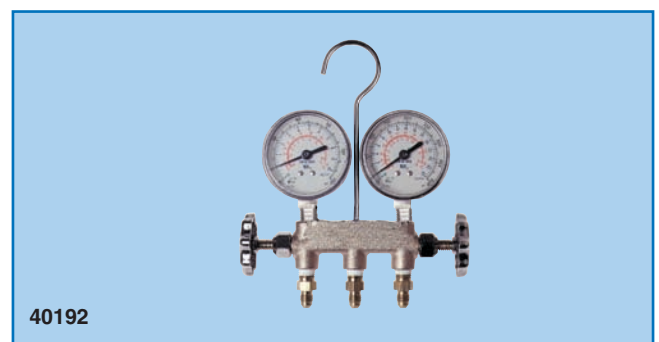
<b>NH3-2S-06-072</b>	<b>NH<sub>3</sub> hose 2 x 3/8" FFL</b> straight L = 180 cm (72")
<b>NH3-2S-06-120</b>	<b>NH<sub>3</sub> hose 2 x 3/8" FFL</b> straight L = 300 cm (120")

- Working pressure for 3/8": **55 bar.**
- Burst pressure for 3/8": **220 bar.**



## 3. "AMMONIA" MANIFOLDS

<b>40190</b>	<b>AMMONIA FORGED STEEL MANIFOLD</b> Non rotative Teflon seat. Finger-tight 2 x 1/4" FPT (for gauges) 3 x 1/4" MFL (for hoses)
<b>40192</b>	<b>FORGED STEEL BODY 40190</b> with 623-WG and 625-WG Ammonia gauges
<b>40193</b>	<b>FORGED STEEL BODY 40190</b> with 623-WG and 625-WG Ammonia gauges and 3 NH3-2S-048 hoses



## 4. Other "AMMONIA" components

<b>16801</b>	Steel fitting straight (1/4" MFL x 1/4" MPT)
<b>16802</b>	Steel fitting angled (1/4" MFL x 1/4" MPT)
<b>16803</b>	Steel fitting (3/8" MFL x 1/4" MPT)
<b>7958301</b>	Gasket for all ITE hoses with connections 1/4", 5/16" and 1/2" ACME

- See NH<sub>3</sub> "3000 STEEL FITTINGS"

